



# LAND & COMMERCIAL, INC.

14416 Old Mill Road, #201, Upper Marlboro, MD 20772-3069

Metro: 301-952-9700 • 1-800-296-7901 • Fax: 301-952-2000

www.LandCommercial.com • LeoBruso@LandCommercial.com

*More than 30 Years of Experience*

**Leo Bruso, SIOR**

## **Commercial Real Estate Digest**

**Winter 2004**

### **How Did Land & Commercial get its Start?**

Specializing in all aspects of the commercial real estate industry, Land & Commercial, Inc. was established in 1974 by Leo Bruso, SIOR, President and Owner. Beginning his career in the real estate industry in 1971, Mr. Bruso has a thorough knowledge of the commercial real estate brokerage and asset management business from his experience as a developer, partner, consultant and manager of real estate including property tax appeals on market value.

Highly respected in the real estate industry, Mr. Bruso is a distinguished member of the Society of Industrial and Office Realtors (SIOR). Individuals designated by the SOCIETY OF INDUSTRIAL AND OFFICE REALTORS® throughout the United States, Canada, Mexico, and abroad are top producers in industrial and office real estate brokerage, representing more than 800 offices in 450 cities worldwide. Society designees are seasoned professionals who abide by a strict code of ethics. The Society's mandatory recertification requirement assures corporate and business clients of the designee's continued excellence in the commercial brokerage field. Not only is Mr. Bruso a member of SIOR, but he has many other designations and awards attributing to his vast knowledge and achievements.



### **The Bruso's Attend the SIOR Conference in Baltimore**



This past fall, Leo Bruso, SIOR and Wife, Faye attended the SIOR Fall Professional Conference held at the Baltimore Marriott Waterfront.

Over 800 members from all over the United States attended. The Maryland/DC and Northern/Virginia Chapter was the host providing an example of Southern hospitality and local seafood that would be hard to surpass. The conference offers approved credit hours for continuing education sessions, round table networking, technology sessions and the special general session. The opening cocktail party was not to be missed, sponsored by Panattoni Development Co.

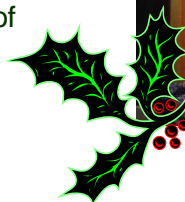
continued on page 2

[www.LandCommercial.com](http://www.LandCommercial.com)

Page 1 of 4

**Metro: 301-952-9700 • 1-800-296-7901 • Fax: 301-952-2000**

One of highlights for Leo and Faye was being invited to attend a private party at the National Aquarium sponsored by ProLogis. Enhancement and increasing your acknowledge is always the theme for these conventions. Prominent members of the real estate industry who have track records that are unmatched provide solutions, ideas, technology and powerful lectures for future growth in the industry. Exhibitors are on hand to answers questions about existing products and new ones being introduced to the market. The "dine around" to various restaurants in and around Baltimore was a huge success. Some of the topics that were available for professional growth were, "How you can Profit from Real Estate Gifts to Charity", "Industrial and Office Trends", Building Lifetime Customers" and "Investment Property Market". The convention ended with a Crab feast at the Nick's Fish House. The spring conference will be held in April 2005 in Boca Raton, Florida. San Joaquin Partnership based out of Stockton California sponsored the wonderful shoe shine girl! Anyone interested in obtaining information about SIOR designation contact Society of Industrial and Office Realtors 202-449-8200



## Alexander Square Business Park

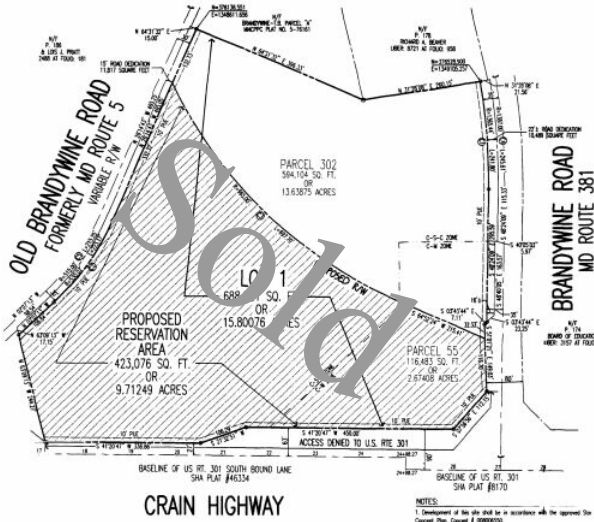
Conveniently located off of Route 5 (Branch Avenue), this 10.55 acre property is zoned CM & CSC. Great location for either a **new vehicle dealership** or under the CSC zone with special exception for a **senior housing facility**. For more information call 301-952-9700.

## Industrial Zoned Lightly Wooded Property

Approximately 3 miles off major traveled interstate I-95, would assist your business to become a great success on this 15.87 acre property. All utilities available on site. Dower House Road average daily traffic count is 8,973 based 2003 statistics. For more information call 301-952-9700.

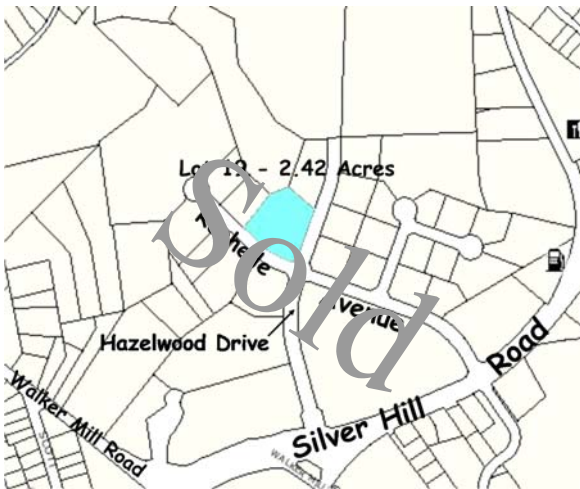


## Commercial Property in Brandywine, Maryland



Approximately .75 acre is CM zoned allowing Vehicle and miscellaneous uses with the other 5.25 acres zoned CSC – Commercial Shopping Center. Level site with Average Daily traffic over 29,575 on US Route 301. Located in a growing area having approximately 1,200 acres of Industrial Park under development, and 2,000 new housing starts. For more information call 301-952-9700.

*Our inventory is constantly changing.  
For information on all of our properties,  
visit us at  
[www.LandCommercial.com](http://www.LandCommercial.com)*



## Industrial Site at Walker Mill Business Park

2.42 acre Industrial site located in the Walker Mill Business Park is zoned I-1 (Light Industrial). Site is conveniently located off of Walker Mill Road and is 1.3 miles from Maryland Route 4 (Pennsylvania Avenue) and approximately 1.9 miles from the Addison Road Metro Station located on Central Avenue. For more information call 301-952-9700.

***Please acknowledge your receipt of this Commercial Digest,  
we look forward to your comments and needs.***

***Email is encouraged***



## LAND & COMMERCIAL, INC.

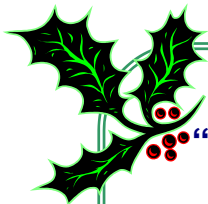
14416 Old Mill Road, #201, Upper Marlboro, MD 20772-3069

Metro: 301-952-9700 • 1-800-296-7901 • Fax: 301-952-2000

[www.LandCommercial.com](http://www.LandCommercial.com) • [LeoBruso@LandCommercial.com](mailto:LeoBruso@LandCommercial.com)

  
**Seasons Greetings**

**From Land & Commercial. We would like to wish each and every one of you a Happy and Safe Holiday Season!**



**The Real Estate Experts!**

**“Experience 30 years of Knowledge, Excellence and Expertise”**

**Land & Commercial, Inc.**

**Buyers and Sellers Turn To Us When It Counts**

**We Specialize in Commercial, Industrial, Building Lots,  
Acreage, Church Sites, and Waterfront**

**[www.LandCommercial.com](http://www.LandCommercial.com)**

